

45° 溶接エルボ

DIN

Size	L1	D	R	T
DN10	10.8	12.0	26.0	1.5
DN15	14.5	18.0	35.0	1.5
DN20	16.6	22.0	40.0	1.5
DN25	20.7	28.0	50.0	1.5
DN32	22.8	34.0	55.0	1.5
DN40	24.8	40.0	60.0	1.5
DN50	29.0	52.0	70.0	1.5
DN65	33.1	70.0	80.0	2.0
DN80	37.3	85.0	90.0	2.0
DN100	41.4	104.0	100.0	2.0
DN125	77.5	129.0	187.0	2.0
DN150	93.2	154.0	225.0	2.0

45° 溶接エルボ

3A

Size	L1	D	R	T
3/4"	11.8	19.05	28.5	1.65
1"	15.8	25.4	38.1	1.65
1-1/4"	19.8	31.8	47.7	1.65
1-1/2"	23.7	38.1	57.2	1.65
2"	31.6	50.8	76.2	1.65
2-1/2"	39.5	63.5	95.3	1.65
3"	47.3	76.2	114.3	1.65
4"	63.1	101.6	152.4	2.1
6"	94.7	152	228.6	2.8

DIN

45° 溶接エルボ

DIN

Size	L1	D	R	T
φ12.7	7.9	12.7	19.1	1.5
φ19.1	11.8	19.1	28.5	1.5
φ25	13.9	25.4	33.5	1.5
φ32	15.7	31.8	38.0	1.5
φ38	20.1	38.1	48.5	1.5
φ45	23.8	45.0	54.0	1.5
φ51	25.1	50.8	60.5	1.5
φ57	28.1	57.0	68.0	1.5
φ63	34.6	63.5	83.5	2.0
φ76	36.7	76.2	88.5	2.0
φ89	42.9	89.0	103.5	2.0
φ102	52.6	101.6	127.0	2.0

45° 溶接エルボ

SMS

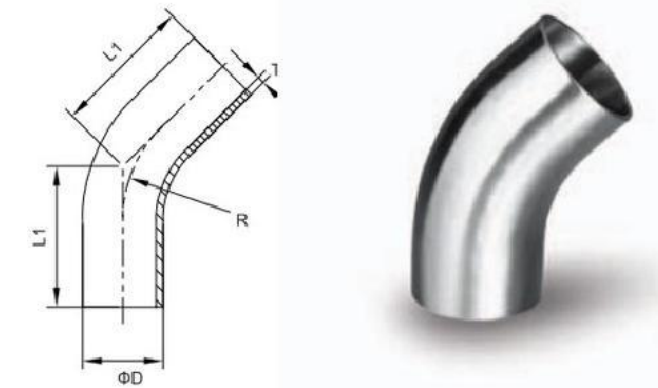
Size	L1	D	R	T-1	T-2
25	15.8	25.4	38.1	1.25	1.5
32	19.8	31.8	47.7	1.25	1.5
38	23.7	38.1	57.2	1.25	1.5
51	31.6	50.8	76.2	1.25	1.5
63	39.5	63.5	95.3	1.6	2.0
76	47.3	76.2	114.3	1.6	2.0
102	63.1	101.6	152.4	2.0	2.0

DIN

45° ストレートエンドの溶接エルボ

DIN

Size	L1	D	R	T
DN10	35.8	12.0	26.0	1.5
DN15	39.5	18.0	35.0	1.5
DN20	41.6	22.0	40.0	1.5
DN25	60.7	28.0	50.0	1.5
DN32	62.8	34.0	55.0	1.5
DN40	64.9	40.0	60.0	1.5
DN50	69.0	52.0	70.0	1.5
DN65	73.1	70.0	80.0	2.0
DN80	92.3	35.0	90.0	2.0
DN100	96.4	104.0	100.0	2.0
DN125	160.2	129.0	187.0	2.0
DN150	193.2	154.0	225.0	2.0



45° ストレートエンドの溶接エルボ

ISO/IDF

Size	L1	D	R	T
φ2	30.2	5.4	335	1.5
φ38	413	381	485	1.5
φ51	58.7	508	60.5	1.5
φ63	76.2	63.5	83.5	2.0
φ76	93.7	76.2	88.5	2.0
φ102	122.2	101.6	127.0	2.0

45° 溶接エルボ

BS4825

Size	L1	L2	D	R	T
1"	108.1	62.7	25.4	38.1	1.6
1-1/2"	127.2	79.6	38.1	57.2	1.6
2"	1463	96.5	508	76.2	1.6
2-1/2"	1658	113.6	63.5	95.3	1.6
3"	185.0	130.5	76.2	14.3	1.6
4"	2231	164.3	101.6	152.4	2.0

45° ストレートエンドの溶接エルボ (L2KS)

3A

Size	L1	D	R	T
1"	30.2	25.4	38.1	1.65
1-1/2"	35.8	31.8	47.7	1.65
1-1/4"	41.3	38.1	57.2	1.65
2"	58.7	50.8	76.2	1.65
2-1/2"	76.2	63.5	95.3	1.65
3"	93.7	76.2	114.3	1.65
4"	122.2	101.6	152.4	2.10

45° ストレートエンドの溶接エルボ

SMS

Size	L1	D	R	T-1	T-2
25	30.2	25.4	38.1	1.25	1.5
32	35.8	31.8	47.7	1.25	1.5
38	41.3	38.1	57.2	1.25	1.5
51	58.7	50.8	76.2	1.25	1.5
63	76.2	63.5	95.3	1.6	2.0
76	93.7	76.2	114.3	1.6	2.0
102	122.2	101.6	152.4	2.0	2.0

自動チューブ溶接 45° エルボ

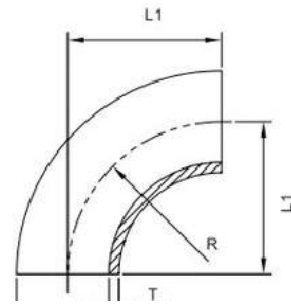
BPE

Nominal Size, in.	A	
	in	mm
1/4	2.000	50.8
3/8	2.000	50.8
1/2	2.250	57.2
3/4	2.250	57.2
1	2.250	57.2
1-1/2	2.500	63.5
2	3.000	76.2
2-1/2	3.375	85.7
3	3.625	92.1
4	4.500	114.3
6	6.250	

45° 溶接エルボ

AS

Size	L1	D	T
3/4"	41.8	19.05	1.6
1"	45.6	25.4	1.6
1-1/4"	49.7	31.8	1.6
1-1/2"	53.4	38.1	1.6
2"	61.5	50.8	1.6
2-1/2"	69.2	63.5	1.6
3"	77.4	76.2	1.6
4"	92.8	101.6	2.0
6"	134.7	152.4	2.8



φD

90° 溶接エルボ

SMS

Size	L1	D	R	T-1	T-2
25	38.1	25.4	38.1	1.25	1.5
32	47.7	31.8	47.7	1.25	1.5
38	57.2	38.1	57.2	1.25	1.5
51	76.2	50.8	76.2	1.25	2.0
63	95.3	63.5	95.3	1.6	2.0
76	114.3	76.2	114.3	1.6	2.0
102	152.4	101.6	152.4	2.0	2.0

90° 溶接エルボ

BS4825

Size	L1	D	R	T
1"	43.5	25.4	38.1	1.6
1-1/2"	63.5	38.1	57.2	1.6
2"	88.5	50.8	76.2	1.6
2-1/2"	113.5	53.5	95.3	1.6
3"	133.5	76.2	14.3	1.6
4"	173.5	101.6	152.4	2.0

90° 溶接エルボ

ISO/IDF

Size	L1	D	R	T
φ12.7	19.1	12.7	19.1	1.5
φ19.1	28.5	19.1	28.5	1.5
φ25	33.5	25.4	33.5	1.5
φ32	38.0	31.8	38.0	1.5
φ38	48.5	38.1	48.5	1.5
φ45	54.0	45.0	54.0	1.5
φ51	60.5	50.8	60.5	1.5
φ57	68.0	57.0	68.0	1.5
φ63	83.5	63.5	83.5	2.0
φ76	88.5	76.2	88.5	2.0
φ89	703.5	89.0	103.5	2.0
φ102	127.0	101.6	127.0	2.0
φ127	190.5	127.0	190.5	2.0
φ152	228.6	152	228.6	2.0

90° 溶接エルボ (2WCL)

3A

Size	L1	D	R	T
1/2"	19.05	12.7	19.05	1.65
3/4"	28.5	19.05	28.5	1.65
1"	38.1	25.4	38.1	1.65
1-1/4"	47.7	37.8	47.7	1.65
1-1/2"	57.2	38.1	57.2	1.65
2"	76.2	50.8	76.2	1.65
2-1/2"	95.3	63.5	95.3	1.65
3"	14.3	76.2	7143	1.65
4"	52.4	101.6	152.4	2.1
6"	228.6	152.4	228.6	2.8

90° 溶接エルボ

DIN

size	L1	D	R	T
DN10	26.0	12.0	26.0	1.5
DN15	35.0	18.0	35.0	1.5
DN20	40.0	22.0	40.0	1.5
DN25	50.0	28.0	50.0	1.5
DN32	55.0	34.0	55.0	1.5
DN40	60.0	40.0	60.0	1.5
DN50	70.0	52.0	70.0	1.5
DN65	80.0	70.0	80.0	2.0
DN80	90.0	85.0	90.0	2.0
DN100	100.0	104.0	100.0	2.0
DN125	187.0	129.0	187.0	2.0
DN150	225.0	154.0	225.0	2.0

90° 溶接エルボ

AS

Size	L1	D	R	T
1/2"	19.1	12.7	19.05	1.6
3/4"	28.6	19.05	28.5	1.6
1"	38.1	25.4	38.1	1.6
1-1/4"	47.7	31.8	47.7	1.6
1-1/2"	57.0	38.1	57.2	1.6
2"	76.2	50.8	76.2	1.65
2-1/2"	95.0	63.5	95.3	1.65
3"	114.2	76.2	114.3	1.6
4"	152.4	101.6	152.4	2.0

90° ストレートエンドの溶接エルボ

DIN

Size	L1	D	R	T
Dn10	38.0	12.0	26.0	1.5
DN15	47.0	18.0	35.0	1.5
DN20	52.0	22.0	40.0	1.5
DN25	70.0	28.0	50.0	1.5
DN32	78.0	34.0	55.0	1.5
DN40	85.0	40.0	60.0	1.5
DN50	97.0	52.0	70.0	1.5
DN65	110.0	70.0	80.0	2.0
DN80	118.0	85.0	90.0	2.0
DN100	140.0	104.0	100.0	2.0

90° 自動チューブ溶接エルボ

Nominal Size, in.	A	
	in	mm
1/4	2.625	66.7
3/8	2.625	66.7
1/2	3.000	76.2
3/4	3.000	76.2
1	3.000	76.2
1-1/2	3.750	95.3
2	4.750	120.7
2-1/2	5.500	139.7
3	6.250	158.8
4	8.000	203.2
6	11.500	292.1

90° ロング溶接エルボ

BS4825

size	L1	D	R	T
1"	65.0	25.4	38.1	1.6
1-1/2"	85.0	38.1	57.2	1.6
"	170.0	50.8	76.2	1.6
2-1/2"	135.0	63.5	95.3	1.6
3"	155.0	76.2	114.3	1.6
4"	195.0	101.6	152.4	2.0

90° ロング溶接エルボ

3A

Size	L1	D	R	T
1/2"	52.4	12.7	19.05	1.65
3/4"	52.4	19.05	28.5	1.65
1"	52.4	25.4	38.1	1.65
1-1/4"	64.0	31.8	47.7	1.65
1-1/2"	74.6	38.1	57.2	1.65
2"	103.2	50.8	76.2	1.65
2-1/2"	131.8	63.5	95.3	1.65
3"	160.3	76.2	114.3	1.65
4"	211.1	101.6	152.4	2.1

90° ストレートエンドの溶接エルボ

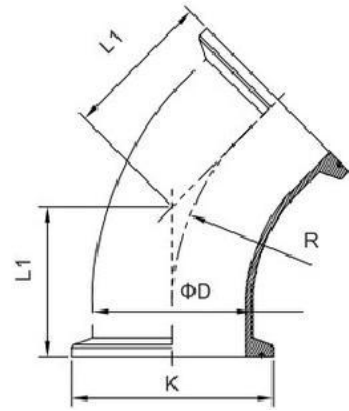
SMS

Size	L1	D	R	T-1	T-2
25	52.4	25.4	38.1	1.25	1.5
32	64.0	31.8	47.7	1.25	1.5
38	74.6	38.1	57.2	1.25	1.5
51	103.2	50.8	76.2	1.25	1.5
63	131.8	63.5	95.3	1.60	2.0
76	160.3	76.2	114.3	1.60	2.0
102	211.1	101.6	152.4	2.0	2.0

90° ストレートエンド付き溶接エルボ

Size	L1	D	T
1/2"	49.1	12.7	1.6
5/8"	53.7	15.9	1.6
3/4"	58.6	19.05	1.6
1"	68.1	25.4	1.6
1-1/4"	77.1	31.8	1.6
1-1/2"	87.0	38.1	1.6
2"	106.2	50.8	1.6
2-1/2"	125.0	63.5	1.6
3"	144.2	76.2	1.6
4"	182.4	101.6	2.0
6"	268.6	152.4	2.8

3A



45° クランプエルボ

3A

Size	L1	K	D	R
1"	28.5	50.5	25.4	38.1
1-1/4"	32.5	50.5	31.8	47.7
1-1/2"	36.4	50.5	38.1	57.2
2"	44.3	64.0	50.8	76.2
2-1/2"	52.2	77.5	63.5	95.3
3"	60.0	91.0	76.2	114.3
4"	79.0	119.0	101.6	152.4

45° クランプエルボ

ISO/IDF

Gize	L1	K	D	R
φ25	34.9	50.5	25.4	33.5
φ32	36.7	50.5	31.8	38.0
φ38	41.1	50.5	38.1	48.5
φ51	46.1	64.0	50.8	60.5
φ63	55.6	77.5	63.5	83.5
φ76	57.7	91.0	76.2	88.5
φ89	63.9	106.0	89.0	103.5
φ102	73.6	119.0	101.6	127.0

45° クランプエルボ

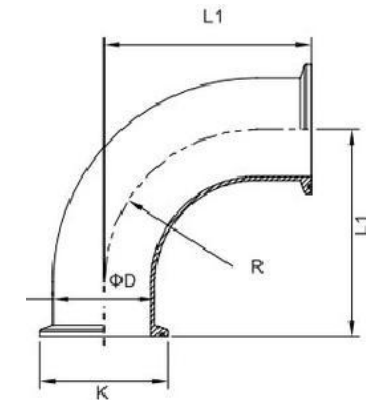
SMS

Size	L1	K	D	R
25	28.5	50.5	25.4	38.1
32	32.5	50.5	31.8	47.7
38	36.5	50.5	38.1	57.2
51	44.3	64.0	50.8	76.2
63	52.2	77.5	63.5	95.3
76	50.0	91.0	76.2	114.3
102	79.0	119.0	101.6	152.4

90° 自動チューブ溶接エルボ

BPE

Nominal Size, in.	L1	
	in	mm
1/4	1.000	25.4
3/8	1.000	25.4
1/2	1.000	25.4
3/4	1.000	25.4
1	1.125	28.6
1-1/2	1.438	36.5
2	1.750	44.5
2-1/2	2.063	52.4
3	2.375	60.3
4	3.125	79.4
6	5.250	133.4



90° クランプエルボ

DIN

Size	L1	K	D	R
DN15	53.0	34.0	18.0	35.0
DN20	58.0	34.0	22.0	40.0
DN25	71.0	50.5	28.0	50.0
DN32	76.0	50.5	34.0	55.0
DN40	81.0	50.5	40.0	60.0
DN50	91.0	64.0	52.0	70.0
DN65	101.0	91.0	70.0	80.0
DN80	111.0	106.0	85.0	90.0
DN100	121.0	119.0	104.0	100.0

90° クランプエルボ

SMS

Size	L1	K	D	R
25	50.8	50.5	25.4	38.1
32	60.4	50.5	31.8	47.7
38	69.9	50.5	38.1	57.2
51	88.9	64.0	50.8	76.2
63	108.0	77.5	63.5	95.3
76	127.0	91.0	76.2	114.3
102	168.3	119.0	101.6	152.4

90° クランプエルボ

ISO/IDF

Size	L1	K	D	R
φ25	54.5	50.5	25.4	33.5
φ32	59.0	50.5	31.8	38.0
φ38	69.5	50.5	38.1	48.5
φ45	75.0	64.0	45.0	54.0
φ51	81.5	64.0	50.8	60.5
φ57	89.0	77.5	57.0	68.0
φ63	104.5	77.5	63.5	83.5
φ76	109.5	91.0	76.2	88.5
φ89	124.5	106.0	89.0	103.5

90° クランプエルボ(2CMP)

3A

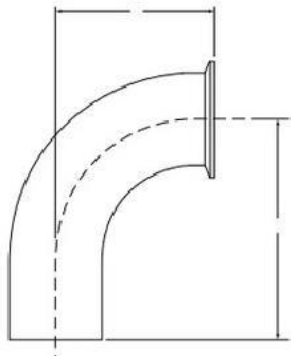
Size	L1	K	D	R
1/2"	40.5	25.2	12.7	19.05
3/4"	50.0	25.2	19.05	28.5
1"	50.8	50.5	25.4	38.1
1-1/4"	60.4	50.5	31.8	47.7
1-1/2"	69.9	50.5	38.1	57.2
2"	88.9	64.0	50.8	76.2
2-1/2"	108.0	77.5	63.5	95.3
3"	127.0	91.0	76.2	114.3
4"	168.3	119.0	101.6	152.4

DT-4.1.1-3 90° サニタリーチャンプ
ジョイントエルボ

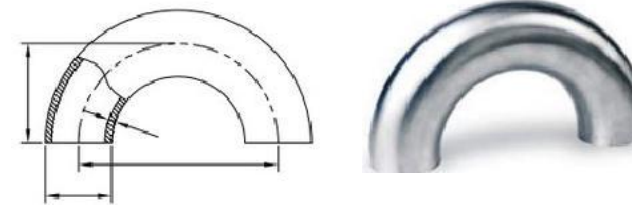
BPE

Nominal Size, in	A	
	n	mm
1/4"	1.625	41.3
3/8"	1.625	41.3
1/2"	1.625	41.3
3/4"	1.625	41.3
1"	2.000	50.8
1-1/2"	2.750	69.9
2"	3.500	88.9
2-1/2"	4.250	108.0
3"	5.000	127.0
4"	6.625	168.3
6"	10.500	266.7

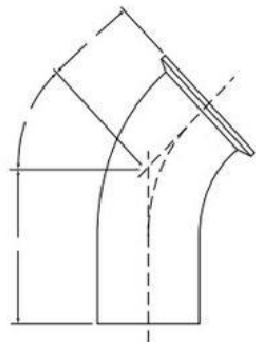
90° サニタリー自動管溶接クランプジョイント
BPE



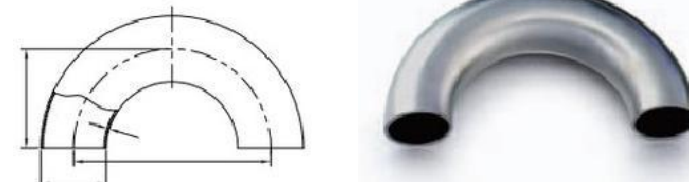
Nominal Size, in.	A		B	
	in	mm	in	mm
1/4"	2.625	66.7	1.625	41.3
3/8"	2.625	66.7	1.625	41.3
1/2"	3.000	76.2	1.625	41.3
3/4"	3.000	76.2	1.625	41.3
1"	3.000	76.2	2.000	50.8
1-1/2"	3.750	95.3	2.750	69.9
2"	4.750	120.7	3.500	88.9
2-1/2"	5.500	139.7	4.250	108.0
3"	6.250	158.8	5.000	127.0
4"	8.000	203.2	6.625	167.6
6"	1.500	292.1	10.500	266.7



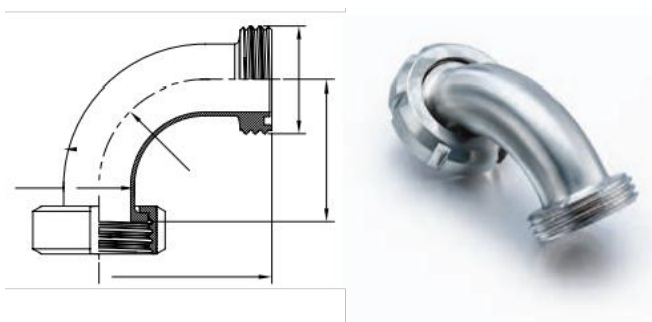
45° 自動チューブ溶接クランプジョイント
BPE



Nominal Size, in.	A		B	
	in	mm	in	mm
1/4"	2.000	50.8	1.000	25.4
3/8"	2.000	50.8	1.000	25.4
1/2"	2.250	57.2	1.000	25.4
3/4"	2.250	57.2	1.000	25.4
1"	2.250	57.2	1.125	28.6
1-1/2"	2.500	63.5	1.438	36.5
2"	3.000	76.2	1.750	44.5
2-1/2"	3.375	85.7	2.063	52.4
3"	3.625	92.1	2.375	60.3
4"	4.500	114.3	3.125	79.4
6"	6.250	158.8	5.250	133.4

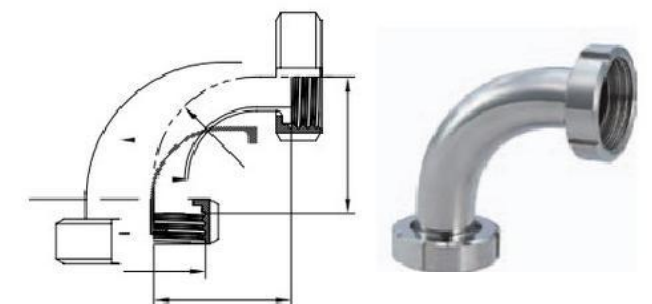


90° 外付けナット型エルボ
SMS

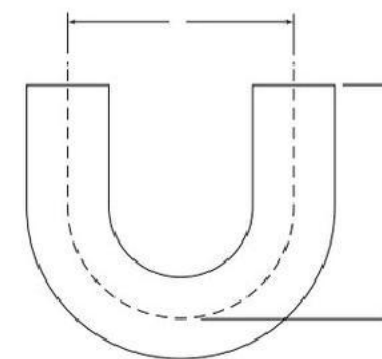


Size	L1	L2	G	D	R
25	53.1	47.1	PD40X1/6	25.4	38.1
32	63.7	57.7	RD48X1/6	31.8	47.7
38	77.2	67.2	RD60X1/6	38.1	57.2
51	96.2	86.2	RD70X1/6	50.8	76.2
63	117.3	106.	RD85X1/6	53.5	95.3
76	137.3	126.3	RD98X1/6	76.2	114.3
102	178.4	165.4	RD125X1/4	101.6	152.4

90° ナット式エルボ
SMS



Size	L2	G	D	R
25	47.1	RD40X1/6	25.4	38.1
32	57.7	RD48X1/6	31.8	47.7
38	67.2	RD60X1/6	38.1	57.2
51	86.2	RD70X1/6	50.8	76.2
63	106.3	RD85X1/6	63.5	95.3
76	126.3	RD98X1/6	76.2	114.3
102	165.4	RD125X1/4	101.6	152.4



180° 溶接エルボ
DIN

Size	DIN			
	L1	D	H	T
DN15	70.0	18.0	35.0	1.5
DN20	80.0	22.0	40.0	1.5
DN25	700.0	28.0	50.0	1.5
DN32	110.0	34.0	55.0	1.5
DN40	120.0	40.0	60.0	1.5
DN50	140.0	52.0	70.0	1.5
DN65	160.0	70.0	80.0	2.0
DN80	180.0	85.0	90.0	2.0
DN100	200.0	104.0	100.0	2.0

180° 溶接エルボ
3A

Size	3A			
	L1	D	H	T
1"	76.2	25.4	38.1	1.65
1-1/2"	114.3	38.1	57.2	1.65
2"	152.4	50.8	76.2	1.65
2-1/2"	190.5	63.5	95.3	1.65
3"	228.6	76.2	114.3	1.65
4"	304.8	101.6	152.4	2.1

180° 溶接エルボ
BPE

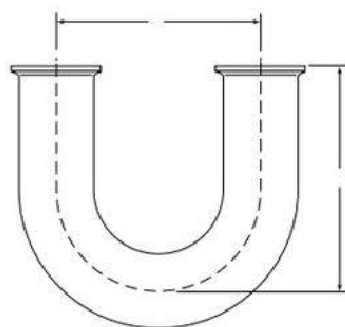
Nominal Size, in.	A		B	
	in	mm	in	mm
1/4"	4.500	114.3	2.625	66.7
3/8"	4.500	114.3	2.625	66.7
1/2"	4.500	114.3	3.000	76.2
3/4"	4.500	114.3	3.000	76.2
1"	3.000	76.2	3.000	76.2
1-1/2"	4.500	114.3	4.500	114.3
2"	6.000	152.4	5.000	127.0
2-1/2"	7.500	190.5	5.750	146.1
3"	9.000	228.6	6.500	165.1
4"	12.000	304.8	8.500	215.9
6"	18.000	457.2	11.500	292.1



180° クランプエルボ

Size	L1	K	D	H
1"	76.2	50.5	25.4	50.8
1-1/2"	114.3	50.5	38.1	69.9
2"	152.4	64.0	50.8	88.9
2-1/2"	190.5	77.5	63.5	108.0
3"	228.6	91.0	76.2	127.0
4"	304.8	119.0	101.6	168.3

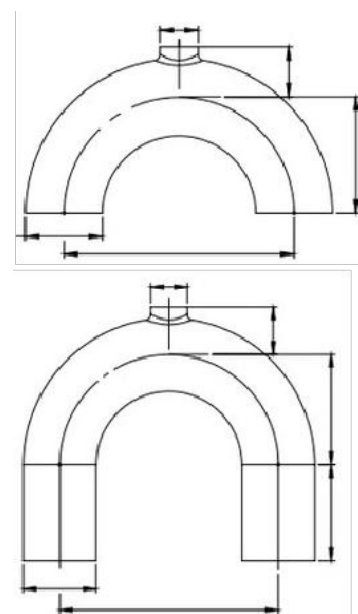
180° 溶接エルボ



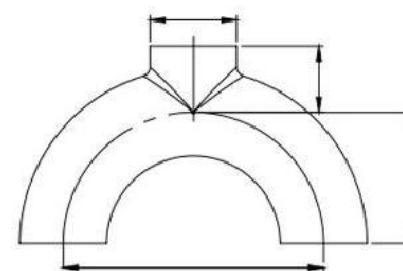
Nominal Size, in.	A		B	
	in	mm	in	mm
1/4"	4.500	114.3	3.125	79.4
3/8"	4.500	114.3	3.125	79.4
1/2"	4.500	114.3	3.500	88.9
3/4"	4.500	114.3	3.500	88.9
1"	3.000	76.2	3.500	88.9
1-1/2"	4.500	114.3	5.000	127.0
2"	6.000	152.4	5.500	139.7
2-1/2"	7.500	190.5	6.250	158.8
3"	9.000	228.6	7.000	177.8
4"	12.000	304.8	9.125	231.8
6"	18.000	457.2	13.000	

溶接U字異径T (ショート/ロング)

ISO/IDF

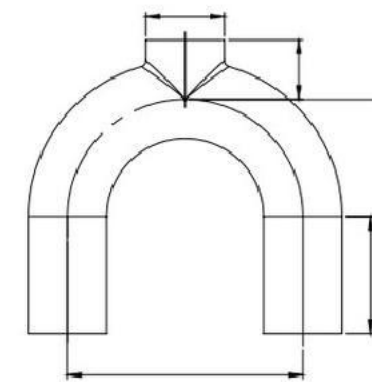


Size	B	F	C	H	L
1" 1/2"	25.4	12.7	22.7	38.1	76.2
1" 3/4"	25.4	19.05	22.1	38.1	76.2
1-1/2" 1/2"	38.1	12.7	29.0	57.2	114.3
1-1/2" 3/4"	38.1	19.05	29.0	57.2	114.3
1-1/2" 1"	38.1	25.4	29.0	57.2	114.3
2" 3/4"	50.8	19.05	35.4	76.2	152.4
2" 1"	50.8	25.4	35.4	76.2	152.4
2" 1-1/2"	50.8	38.1	35.4	76.2	152.4
2-1/2" 3/4"	63.5	19.05	41.8	93.5	190.5
2-1/2" 1"	63.5	25.4	41.8	93.5	190.5
2-1/2" 1-1/2"	63.5	38.1	41.8	93.5	190.5
2-1/2" 2"	63.5	50.8	41.8	93.5	190.5
3" 1"	76.2	25.4	48.1	114.3	228.6
3" 1-1/2"	76.2	38.1	48.1	114.3	228.6
3" 2"	76.2	50.8	48.1	114.3	228.6
3" 2-1/2"	76.2	63.5	48.1	114.3	228.6
4" 1"	101.6	25.4	60.8	152.4	304.8
4" 2"	101.6	50.8	60.8	152.4	304.8
4" 2-1/2"	101.6	63.5	60.8	152.4	304.8
4" 3"	101.6	76.2	60.8	152.4	304.8



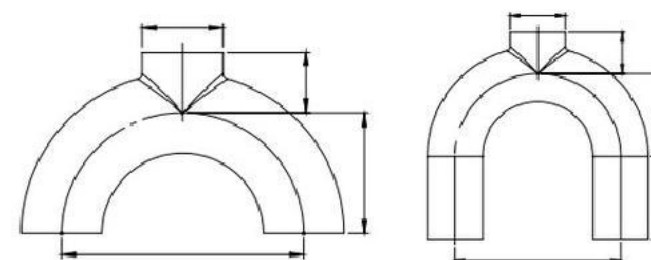
溶接U字Tショート

Size	D		L	H	C
	11850-1	11850-2			
DN10	12	13	52	26	16
DN15	18	19	70	35	19
DN20	22	23	80	40	21
DN25	28	29	100	50	24
DN32	34	35	110	55	27
DN40	40	41	120	60	30
DN50	52	53	140	70	36
DN65	70	70	160	80	45
DN80	85	85	180	90	52.5
DN100	104	104	200	100	62
DN125	129	129	375	187.5	74.5
DN150	154	154	450	225	87



溶接U字Tロング

Size	D		L	H	C
	11850	11850-2			
DN10	12	13	52	26	16
DN15	18	19	70	35	19
DN20	22	23	80	40	21
DN25	28	29	100	50	24
DN32	34	35	110	55	27
DN40	40	41	120	60	30
DN50	52	53	140	70	36
DN65	70	70	160	80	45
DN80	85	85	180	90	52.5
DN100	104	104	200	100	62
DN125	129	129	375	187.5	74.5
DN150	154	154	450	225	87



溶接U字Tショート

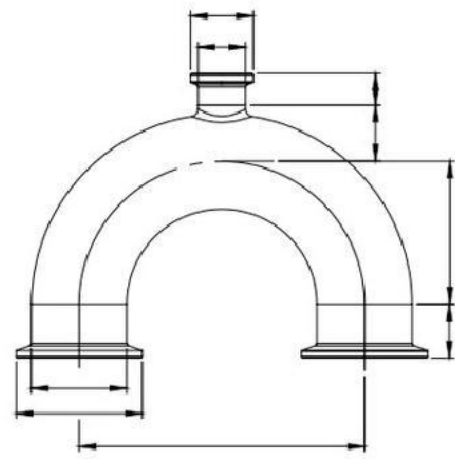
Size	D	C	H	L
1"	25.4	22.7	38.1	76.2
1-1/2"	38.1	29.0	57.2	114.3
2"	50.8	35.4	76.2	152.4
2-1/2"	63.5	41.8	95.3	190.5
3"	76.2	48.1	114.3	228.6
4"	101.6	60.8	152.4	304.8

ISO/IDF

溶接U字Tロング

Size	D	C	H	L
1"	25.4	22.7	38.1	76.2
1-1/2"	38.1	29.0	57.2	114.3
2"	50.8	35.4	76.2	152.4
2-1/2"	63.5	41.8	95.3	190.5
3"	76.2	48.1	114.3	228.6
4"	101.6	60.8	152.4	304.8

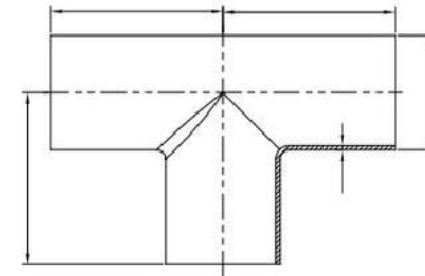
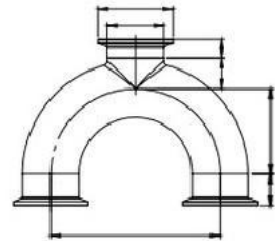
ISO/IDF



溶接U字Tロングタイプ

ISO/IDF

Size	D	C	H	L	G
1"	25.4	22.7	38.1	76.2	12.7 21.5
1-1/2"	38.1	29.0	57.2	114.3	12.7 21.5
2"	50.8	35.4	76.2	152.4	12.7 21.5
2-1/2"	63.5	41.8	95.3	190.5	12.7 21.5
3"	76.2	48.1	114.3	228.6	12.7 21.5
4"	101.6	60.8	152.4	304.8	15.9



溶接T

SMS

Size	L1	D	T-1	T-2
25	50.5	25.4	1.25	1.5
32	50.5	31.8	1.25	1.5
38	70.0	38.1	1.25	1.5
51	82.0	50.8	1.25	1.5
63	105.0	63.5	1.6	2.0
76	110.0	76.2	1.6	2.0
102	150.0	101.6	2.0	2.0

溶接T

DIN

Size	L1	D	T
DN10	26.0	12.0	1.5
DN15	35.0	18.0	1.5
DN20	40.0	22.0	1.5
DN25	50.0	28.0	1.5
DN32	55.0	34.0	1.5
DN40	60.0	40.0	1.5
DN50	70.0	52.0	1.5
DN65	80.0	70.0	2.0
DN80	90.0	85.0	2.0
DN100	100.0	104.0	2.0
DN125	187.0	129.0	2.0
DN150	225.0	154.0	2.0

クイックインストール U字異径T

ISO/IDF

Size	A	B	E	F	C	H	L	G
1" 1/2"	50.5	25.4	25	12.7	15.7	38.1	76.2	12.7 21.5
1" 3/4"	50.5	25.4	25	19.05	15.7	38.1	76.2	12.7 21.5
1-1/2" 1/2"	50.5	38.1	25	12.7	22.1	57.2	114.3	12.7 21.5
1-1/2" 3/4"	50.5	38.1	25	19.05	22.1	57.2	114.3	12.7 21.5
1-1/2" 1"	50.5	38.1	50.5	25.4	22.1	57.2	114.3	12.7 21.5
2" 3/4"	64	50.8	25	19.05	28.4	76.2	152.4	12.7 21.5
2" 1"	64	50.8	50.5	25.4	28.4	76.2	152.4	12.7 21.5
2" 1-1/2"	64	50.8	50.5	38.1	28.4	76.2	152.4	12.7 21.5
2-1/2" 3/4"	77.5	63.5	25	19.05	35.3	95.3	190.5	12.7 21.5
2-1/2" 1"	77.5	63.5	50.5	25.4	35.3	95.3	190.5	12.7 21.5
2-1/2" 1-1/2"	77.5	63.5	50.5	38.1	35.3	95.3	190.5	12.7 21.5
2-1/2" 2"	77.5	63.5	64	50.8	35.3	95.3	190.5	12.7 21.5
3" 1"	91	76.2	50.5	25.4	41.6	114.3	228.6	12.7 21.5
3" 1-1/2"	91	76.2	50.5	38.1	41.6	114.3	228.6	12.7 21.5
3" 2"	91	76.2	64	50.8	41.6	114.3	228.6	12.7 21.5
3" 2-1/2"	91	76.2	77.5	63.5	41.6	114.3	228.6	12.7 21.5
4" 1"	119	101.6	50.5	25.4	60.8	152.4	304.8	15.9 21.5
4" 2"	119	101.6	64	50.8	60.8	152.4	304.8	15.9 21.5
4" 2-1/2"	119	101.6	77.5	63.5	60.8	152.4	304.8	15.9 21.5
4" 3"	119	101.6	91	76.2	60.8	152.4	304.8	15.9 21.5

溶接T

3A

Size	L1	D	T
1/2"	22.5	12.7	1.65
3/4"	28.6	19.05	1.65
1"	28.6	25.4	1.65
1-1/4"	38.0	31.8	1.65
1-1/2"	42.05	38.1	1.65
2"	52.35	50.8	1.65
2-1/2"	59.55	63.5	1.65
3"	65.9	76.2	1.65
4"	87.35	101.6	2.10

溶接T

BS4825

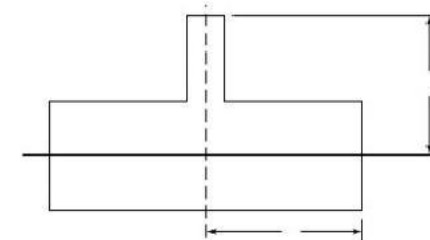
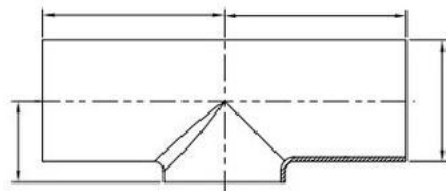
Size	L1	D	T
1"	43.5	25.4	1.6
1-1/2"	63.5	38.1	1.6
2"	88.5	50.8	1.6
2-1/2"	113.5	63.5	1.6
3"	133.5	76.2	1.6
4"	173.5	101.6	2.0

溶接T

ISO/IDF

size	D	T	L1
φ12.7	12.7	1.5	19.1
φ19.1	19.1	1.5	28.5
φ25	25.4	1.5	33.5
φ32	31.8	1.5	38.0
φ38	38.1	1.5	48.5
φ45	45.0	1.5	54.0
φ51	50.8	1.5	60.5
φ57	57.0	1.5	68.0
φ63	63.5	2.0	70.0
φ76	76.2	2.0	76.0
φ89	89.0	2.0	86.0
φ102	101.6	2.0	95.0
φ114.3	114.3	2.0	105.0
φ133	133.0	2.0	124.0
φ159	159.0	2.0	143.0





ショート型溶接T

BS4825

Size	L1	L2	D	T
1"	43.5	14.3	25.4	1.6
1-1/2"	63.5	21.6	38.1	1.6
2"	88.5	28.9	50.8	1.6
2-1/2"	113.5	35.3	63.5	1.6
3"	133.5	43.1	76.2	1.6
4"	173.5	56.2	101.6	2.0

ショート型溶接T

SMS

Size	L1	L2	D
25	55.0	14.5	25.4
32	55.0	18.0	31.8
38	70.0	21.5	38.1
51	82.0	29.5	50.8
63	105.0	36.0	63.5
76	110.0	43.0	76.2
102	150.0	57.0	101.6

DT4. 1.2-6 自動チューブ溶接レデュシング T

BPE

Nominal Size,in		A		B	
X	Y	in.	mm	in.	mm
3/8	1/4	1.750	44.5	1.750	44.5
1/2	1/4	1.875	47.6	1.875	47.6
1/2	3/8	1.875	47.6	1.875	47.6
3/4	1/4	2.000	50.8	2.000	50.8
3/4	3/8	2.000	50.8	2.000	50.8
3/4	1/2	2.000	50.8	2.000	50.8
1	1/4	2.125	54.0	2.125	54.0
1	3/8	2.125	54.0	2.125	54.0
1	1/2	2.125	54.0	2.125	54.0
1	3/4	2.125	54.0	2.125	54.0
1-1/2	1/2	2.375	60.3	2.375	60.3
1-1/2	3/4	2.375	60.3	2.375	60.3
1-1/2	1	2.375	60.3	2.375	60.3
2	1/2	2.875	78.0	2.625	66.7
2	3/4	2.875	78.0	2.625	66.7
2	1	2.875	73.0	2.625	66.7
2	1-1/2	2.875	73.0	2.625	66.7
2-1/2	1/2	3.125	79.4	2.875	73.0
2-1/2	3/4	3.125	79.4	2.875	73.0
2-1/2	1	3.125	79.4	2.875	73.0
2-1/2	1-1/2	3.125	79.4	2.875	73.0
2-1/2	2	3.125	79.4	2.875	73.0
3	1/2	3.375	85.7	3.125	79.4
3	3/4	3.375	85.7	3.125	79.4
3	1	3.375	85.7	3.125	79.4
3	1-1/2	3.375	85.7	3.125	79.4
3	2	3.375	85.7	3.125	79.4
3	2-1/2	3.375	85.7	3.125	79.4
4	1/2	4.125	104.8	3.625	92.1
4	3/4	4.125	104.8	3.625	92.1
4	1	4.125	104.8	3.625	92.1
4	1-1/2	4.125	104.8	3.625	92.1
4	2	4.125	104.8	3.625	92.1
4	2-1/2	4.125	104.8	3.625	92.1
4	3	4.125	104.8	3.625	92.1
6	3	5.625	142.9	4.875	123.8
6	4	5.625	142.9	5.125	130.2

ロング型溶接レデュシング T

SMS

Size		L1	D	D2
32	25	55 C	31.8	25.4
38	25	70.0	38.1	25.4
38	32	70.0	38.1	31.8
51	32	82.0	50.8	31.8
51	38	82.0	50.8	38.1
63	51	105.0	63.5	50.8
76	51	110.0	76.2	50.8
76	63	110.0	76.2	63.5
102	51	150.0	101.6	50.8
102	63	150.0	101.6	63.5
102	76	150.0	101.6	76.2

ショート型溶接T

DIN

Size	L1	L2	D	T
DN10	26.0	7.5	12.0	1.5
DN15	35.0	10.5	18.0	1.5
DN20	40.0	12.5	22.0	1.5
DN25	50.0	16.5	28.0	1.5
DN32	55.0	19.5	34.0	1.5
DN40	60.0	22.5	40.0	1.5
DN50	70.0	30.0	52.0	1.5
DN65	80.0	39.5	70.0	2.0
DN80	90.0	47.5	85.0	2.0
DN100	100.0	58.0	104.0	2.0
DN125	187.0	70.5	129.0	2.0
DN150	225.0	83.0	154.0	2.0

ショート型溶接T

3A

Size	L1	L2	D	T
1"	28.6	14.7	25.4	1.65
1-1/4"	38.0	18.0	31.8	1.65
1-1/2"	42.05	21.0	38.1	1.65
2"	52.35	27.4	50.8	1.65
2-1/2"	59.55	34.8	63.5	1.65
3"	65.9	41.7	76.2	1.65
4"	87.35	53.8	101.6	2.1

ショート型溶接T

Size	L1	L2	D	T	L1(短型)
Φ25	33.5	14.7	25.4	1.5	33.5
Φ32	38.0	18.0	31.8	1.5	38.0
Φ38	48.5	21.0	38.1	1.5	48.5
Φ51	60.5	27.4	50.8	1.5	60.5
Φ63	83.5	34.8	63.5	2.0	67.5
Φ76	88.5	41.1	76.2	2.0	77.0
Φ89	103.5	47.5	89.0	2.0	86.0
Φ102	127.0	53.8	101.6	2.0	100.0

ロング型溶接T(TW)

3A

Size	L1	D	T
1/2"	38.1	12.7	1.65
3/4"	47.6	19.05	1.65
1"	47.6	25.4	1.65
1-1/4"	47.7	31.8	1.65
1-1/2"	57.2	38.1	1.65
2"	76.2	50.8	1.65
2-1/2"	76.2	63.5	1.65
3"	82.6	76.2	1.65
4"	98.4	101.6	2.10

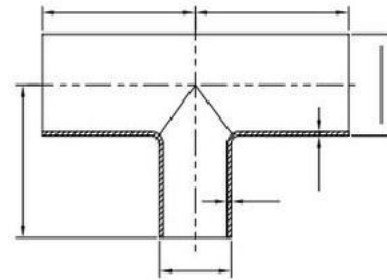
ショート型溶接T

BS4825

Size	L1	D	T
1"	65.0	25.4	1.6
1-1/2"	85.0	38.1	1.6
2"	110.0	50.8	1.6
2-1/2"	135.0	63.5	1.6
3"	155.0	76.2	1.6
4"	195.0	101.6	

ショート型溶接レデュシング T

Size		L1	L2	D	D2
32	25	55.0	18	31.8	25.4
38	25	70.0	21.5	38.1	25.4
38	32	70.0	21.5	38.1	31.8
51	32	82.0	29.5	50.8	31.8
51	38	82.0	29.5	50.8	38.1
63	51	105.0	36	63.5	50.8
76	51	110.0	43	76.2	50.8
76	63	110.0	43	76.2	63.5
102	51	150.0	57	101.6	50.8
102	63	150.0	57	101.6	63.5
102	76	150.0	57	101.6	76.2



溶接レデュシング T

ISO/IDF

Size	L1	D	D2	T1	T2	L1	
φ32	φ25	38.0	31.8	25.4	1.5	1.5	38.0
φ38	φ25	48.5	38.1	25.4	1.5	1.5	48.5
φ38	φ32	48.5	38.1	31.8	1.5	1.5	48.5
φ51	φ32	60.5	50.8	31.8	1.5	1.5	60.5
φ51	φ38	60.5	50.8	38.1	1.5	1.5	60.5
φ63	φ51	83.5	63.5	50.8	2.0	1.5	67.5
φ76	φ51	88.5	76.2	50.8	2.0	1.5	77.0
φ76	φ63	88.5	76.2	63.5	2.0	2.0	77.0
φ102	φ51	127.0	101.6	50.8	2.0	1.5	100.0
φ102	φ63	127.0	101.6	63.5	2.0	2.0	100.0
φ102	φ76	127.0	101.6	76.2	2.0	2.0	100.0

ショート型レデュシング T

BS4825

Size	L1	L2	D	D2	T1	T	
1"	1/2"	44.0	14.3	25.4	12.7	1.6	1.6
1-1/2"	1/2"	75.0	21.6	38.1	12.7	1.6	1.6
1-1/2"	1"	75.0	21.6	38.1	25.4	1.6	1.6
2"	1/2"	89.0	28.9	50.8	12.7	1.6	1.6
2"	1"	89.0	28.9	50.8	25.4	1.6	1.6
2"	1-1/2"	89.0	28.9	50.8	38.1	1.6	1.6
2-1/2"	1/2"	95.0	35.3	63.5	12.7	1.6	1.6
2-1/2"	1"	95.0	35.3	63.5	25.4	1.6	1.6
2-1/2"	1-1/2"	95.0	35.3	63.5	38.1	1.6	1.6
2-1/2"	2"	95.0	35.3	63.5	50.8	1.6	1.6
3"	1/2"	95.0	43.1	76.2	12.7	1.6	1.6
3"	1"	95.0	43.1	76.2	25.4	1.6	1.6
3"	1-1/2"	95.0	43.1	76.2	38.1	1.6	1.6
3"	2"	95.0	43.1	76.2	50.8	1.6	1.6
3"	2-1/2"	95.0	43.1	76.2	63.5	1.6	1.6
4"	1/2"	127.0	56.2	101.6	12.7	2.0	1.6
4"	1"	127.0	56.2	101.6	25.4	2.0	1.6
4"	1-1/2"	127.0	56.2	101.6	38.1	2.0	1.6
4"	2"	127.0	56.2	101.6	50.8	2.0	1.6
4"	2-1/2"	127.0	56.2	101.6	63.5	2.0	1.6
4"	3"	127.0	56.2	101.6	76.2	2.0	1.6



レデュシング T

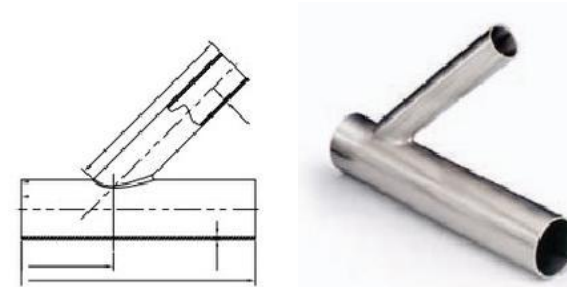
DIN

Size	L1	D	D2	T1	T2	
DN15	DN10	35.0	18.0	12.0	1.5	1.5
DN20	DN15	40.0	22.0	18.0	1.5	1.5
DN25	DN15	50.0	28.0	18.0	1.5	1.5
DN25	DN20	50.0	28.0	22.0	1.5	1.5
DN32	DN25	55.0	34.0	28.0	1.5	1.5
DN40	DN2C	60.0	40.0	28.0	1.5	1.5
DN40	DN32	60.0	40.0	34.0	1.5	1.5
DN50	DN3	70.0	52.0	34.0	1.5	1.5
DN50	DN40	70.0	52.0	40.0	1.5	1.5
DN65	DN50	80.0	70.0	52.0	2.0	1.5
DN80	DN50	90.0	85.0	52.0	2.0	1.5
DN8C	DN65	90.0	85.0	70.0	2.0	2.0
DN100	DN5C	100.0	104.0	52.0	2.0	1.5
DN100	DN65	100.0	104.0	70.0	2.0	2.0
DN100	DN80	100.0	104.0	85.0	2.0	2.0

ロング型レデュシング T (LTRW)

3A

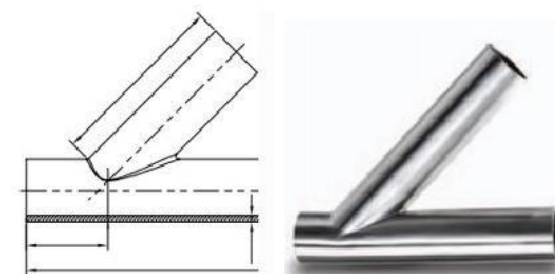
Size	L1	D	D2	T1	T2	
3/4"	1/2"	47.6	19.05	12.7	1.65	1.65
1"	1/2"	47.6	25.4	12.7	1.65	1.65
1"	3/4"	47.6	25.4	19.05	1.65	1.65
1-1/4"	1"	47.7	31.8	25.4	1.65	1.65
1-1/2"	1"	57.2	38.1	25.4	1.65	1.65
1-1/2"	1-1/4"	57.2	38.1	31.8	1.65	1.65
2"	1-1/4"	76.2	50.8	31.8	1.65	1.65
2"	1-1/2"	76.2	50.8	38.1	1.65	1.65
2-1/2"	2"	76.2	63.5	50.8	1.65	1.65
3"	2"	82.6	76.2	50.8	1.65	1.65
3"	2-1/2"	82.6	76.2	63.5	1.65	1.65
4"	2"	98.4	101.6	50.8	2.1	1.65
4"	2-1/2"	98.4	101.6	63.5	2.1	1.65
4"	3"	98.4	101.6	76.2	2.1	1.65



突合せ溶接斜型レジュシング T

3A

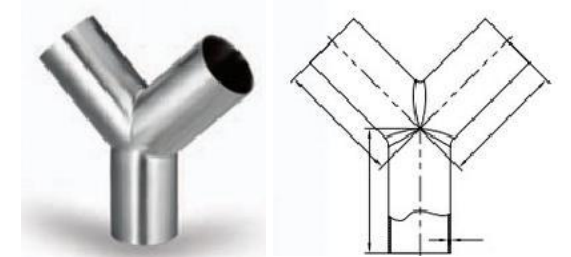
Size	L1	L2	L3	T1	T2
1-1/2"x1"	187.3	157.2	30.2	1.65	1.65
2"x1"	222.2	181.0	41.3	1.65	1.65
2"x1-1/2"	222.2	181.0	41.3	1.65	1.65
2-1/2"x1"	254.0	215.9	38.1	1.65	1.65
2-1/2"x1-1/2"	254.0	215.9	38.1	1.65	1.65
2-1/2"x2"	254.0	215.9	38.1	1.65	1.65
3"x1"	273.1	225.4	47.6	1.65	1.65
3"x1-1/2"	273.1	225.4	47.6	1.65	1.65
4"x1"	273.1	225.4	47.6	1.65	1.65
3"x2-1/2"	273.1	225.4	47.6	1.65	1.65
4"x1"	325.5	273.1	52.4	2.10	1.65
4"x1-1/2"	325.5	273.1	52.4	2.10	1.65
4"x2"	274.7	273.1	52.4	2.10	1.65
4"x2-1/2"	325.5	273.1	52.4	2.10	1.65
4"x3"	325.5	273.1	52.4	2.10	1.65



突合せ溶接傾斜型 T

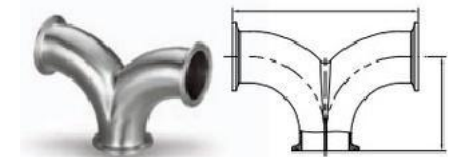
3A

Size	L1	L2	L3	T
1"	152.4	127.0	25.4	1.65
1-1/2"	187.3	157.2	30.2	1.65
2"	222.2	180.9	41.3	1.65
2-1/2"	254.0	215.9	38.1	1.65
3"	273.1	225.4	47.6	1.65
4"	325.5	273.1	52.4	2.10
6"	419.1	317.5	101.6	2.80



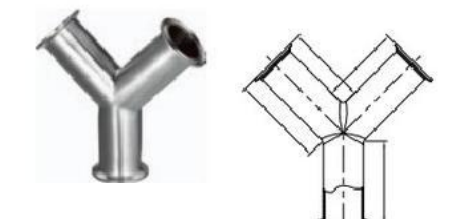
突合せ溶接 Y 型 T

Size	L1	T
1/2"	50.8	1.65
3/4"	50.8	1.65
1"	76.2	1.65
1-1/2"	76.2	1.65
2"	101.6	1.65
2-1/2"	127.0	1.65
3"	152.4	1.65
4"	203.2	2.10
6"	203.2	2.80



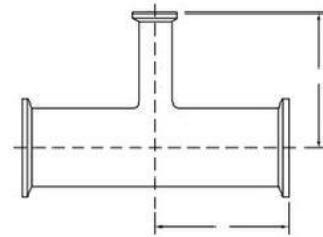
90° クランプダブルバンド

Size	L1	L2
1"	50.8	101.6
1-1/2"	69.85	139.7
1-1/4"	60.4	120.8
2"	88.9	177.8
2-1/2"	107.9	215.9
3"	127.0	228.6
4"	168.4	336.8



135° クランプ式 Y 型

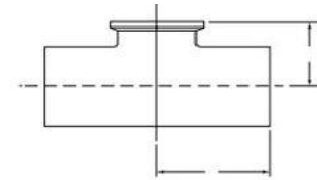
Size	L1	L2
1-1/2"	63.5	74.6
2"	79.4	95.3
2-1/2"	98.4	117.5
3"	114.3	136.5
4"	152.4	182.6



サニタリークランプジョイントレデュシングT
DT-4.1.2-8

BPE

Nominal Size, in.		A		B	
X	Y	in	mm	in	mm
3/8	1/4	2.250	57.2	2.250	57.2
1/2	1/4	2.375	60.3	2.375	60.3
1/2	3/8	2.375	60.3	2.375	60.3
3/4	1/4	2.500	63.5	2.500	63.5
3/4	3/8	2.500	63.5	2.500	63.5
3/4	1/2	2.500	63.5	2.500	63.5
1	1/4	2.625	66.7	2.625	66.7
1	3/8	2.625	66.7	2.625	66.7
1	1/2	2.625	66.7	2.625	66.7
1	3/4	2.625	66.7	2.625	66.7
1-1/2	1/2	2.875	73.0	2.875	73.0
1-1/2	3/4	2.875	73.0	2.875	73.0
1-1/2	1	2.875	73.0	2.875	73.0
2	1/2	3.375	85.7	3.125	79.4
2	3/4	3.375	85.7	3.125	79.4
2	1	3.375	85.7	3.125	79.4
2	1-1/2	3.375	85.7	3.125	79.4
2-1/2	1/2	3.625	92.1	3.375	85.7
2-1/2	3/4	3.625	92.1	3.375	85.7
2-1/2	1	3.625	92.1	3.375	85.7
2-1/2	1-1/2	3.625	92.1	3.375	85.7
2-1/2	2	3.625	92.1	3.375	85.7
3	1/2	3.875	98.4	3.625	92.1
3	3/4	3.875	98.4	3.625	92.1
3	1	3.875	98.4	3.625	92.1
3	1-1/2	3.875	98.4	3.625	92.1
3	2	3.875	98.4	3.625	92.1
3	2-1/2	3.875	98.4	3.625	92.1
4	1/2	4.750	120.7	4.125	104.8
4	3/4	4.750	120.7	4.125	104.8
4	1	4.750	120.7	4.125	104.8
4	1-1/2	4.750	120.7	4.125	104.8
4	2	4.750	120.7	4.375	111.1
4	2-1/2	4.750	120.7	4.375	111.1
4	3	4.750	120.7	4.375	111.1
6	1/2	7.125	181.0	5.375	136.5
6	4	7.125	181.0	5.750	146.1



ショートクランプ式溶接T
DT-4.1.2-2

BPE

Nominal Size, in.	A		B	
	in	mm	in	mm
1/2	2.250	57.2	1.000	25.4
3/4	2.375	60.3	1.125	28.6
1	2.625	66.7	1.125	28.6
1-1/2	2.875	73.0	1.375	34.9
2	3.375	85.7	1.625	41.3
2-1/2	3.625	92.1	1.875	47.6
3	3.875	98.4	2.125	54.0
4	4.750	120.7	2.750	69.9
6	7.125	181.0	4.625	117.5

サニタリークランプジョイントショートアウトレットT
DT-4.1.2-5

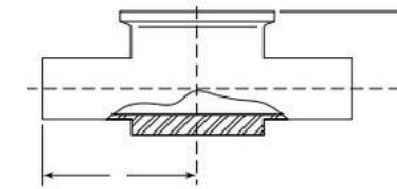
BPE

Nominal Size, in.	A		B	
	in	mm	in	mm
1/2	2.250	57.2	1.000	25.4
3/4	2.375	60.3	1.125	28.6
1	2.625	66.7	1.125	28.6
1-1/2	2.875	73.0	1.375	34.9
2	3.375	85.7	1.625	41.3
2-1/2	3.625	92.1	1.875	47.6
3	3.875	98.4	2.125	54.0
4	4.750	120.7	2.750	69.9
6	7.125	181.0	4.625	117.5

サニタリークランプジョイントショートアウトレットT
DT-4.1.2-5

ISO/IDF

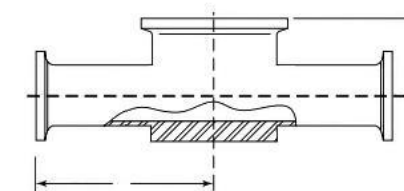
SIZE	K	D	L1
Φ25	50.5	25.4	55.0
Φ32	50.5	31.8	59.5
Φ38	50.5	38.1	70.0
Φ51	64.0	50.8	82.0
Φ63	77.5	63.5	91.5
Φ76	91.0	76.2	97.5
Φ89	106.0	89.0	107.5
Φ102	119.0	101.6	116.5



自動チューブ溶接器具T
DT-4.1.2-10

BPE

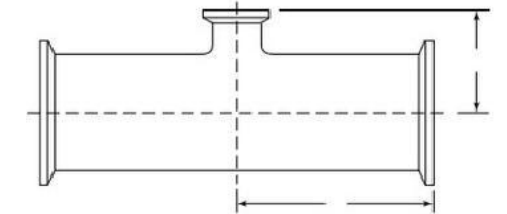
Nominal Size, in.		A		B	
X	Y	in	mm	in	mm
1/2x1-1/2		2.500	63.5	0.875	22.2
3/4x1-1/2		2.500	63.5	1.000	25.4
1x1-1/2		2.500	63.5	1.125	28.6
1/2x2		2.750	69.9	1.000	25.4
3/4x2		2.750	69.9	1.125	28.6
1x2		2.750	69.9	1.250	31.8
1-1/2x2		2.750	69.9	1.500	38.1



サニタリークランプジョイント器具T

BPE

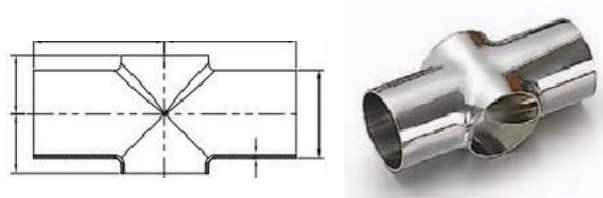
Nominal Size, in.		A		B	
X	Y	in	mm	in	mm
1/2x1-1/2		3.000	76.2	0.875	22.2
3/4x1-1/2		3.000	76.2	1.000	25.4
1x1-1/2		3.000	76.2	1.125	28.6
1/2x2		3.250	82.6	1.000	25.4
3/4x2		3.250	82.6	1.125	28.6
1x2		3.250	82.6	1.250	31.8
1-1/2x2		3.250	82.6	1.500	38.1



ショートクリップオンレデュシングT
DT-4.1.2-9

BPE

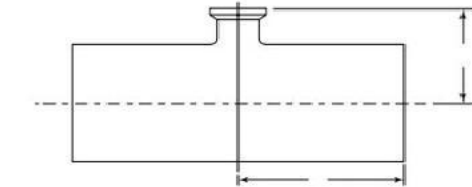
Nominal Size, in.		A		B	
X	Y	in	mm	in	mm
3/8	1/4	2.250	57.2	1.000	25.4
1/2	1/4	2.375	60.3	1.000	25.4
1/2	3/8	2.375	60.3	1.000	25.4
3/4	1/4	2.500	63.5	1.000	25.4
3/4	3/8	2.500	63.5	1.000	25.4
3/4	1/2	2.500	63.5	1.000	25.4
1	1/4	2.625	66.7	1.125	28.6
1	3/8	2.625	66.7	1.125	28.6
1	1/2	2.625	66.7	1.125	28.6
1	3/4	2.625	66.7	1.125	28.6
1-1/2	1/2	2.875	73.0	1.375	34.9
1-1/2	3/4	2.875	73.0	1.375	34.9
1-1/2	1	2.875	73.0	1.375	34.9
2	1/2	3.375	85.7	1.625	41.3
2	3/4	3.375	85.7	1.625	41.3
2	1	3.375	85.7	1.625	41.3
2	1-1/2	3.375	85.7	1.625	41.3
2-1/2	1/2	3.625	92.1	1.875	47.6
2-1/2	3/4	3.625	92.1	1.875	47.6
2-1/2	1	3.625	92.1	1.875	47.6
2-1/2	1-1/2	3.625	92.1	1.875	47.6
2-1/2	2	3.625	92.1	1.875	47.6
3	1/2	3.875	98.4	2.125	54.0
3	3/4	3.875	98.4	2.125	54.0
3	1	3.875	98.4	2.125	54.0
3	1-1/2	3.875	98.4	2.125	54.0
3	2	3.875	98.4	2.125	54.0
3	2-1/2	3.875	98.4	2.125	54.0
4	1/2	4.750	120.7	2.625	66.7
4	3/4	4.750	120.7	2.625	66.7
4	1	4.750	120.7	2.625	66.7
4	1-1/2	4.750	120.7	2.625	66.7
4	2	4.750	120.7	2.625	66.7
4	2-1/2	4.750	120.7	2.625	66.7
4	3	4.750	120.7	2.625	66.7
6	1/2	7.125	181.0	3.625	92.1
6	3/4	7.125	181.0	3.625	92.1
6	1	7.125	181.0	3.625	92.1
6	1-1/2	7.125	181.0	3.625	92.1
6	2	7.125	181.0	3.625	92.1
6	2-1/2	7.125	181.0	3.625	92.1
6	3	7.125	181.0	3.625	92.1
6	4	7.125	181.0	3.750	95.3



ショートタイプ溶接クロス

SMS

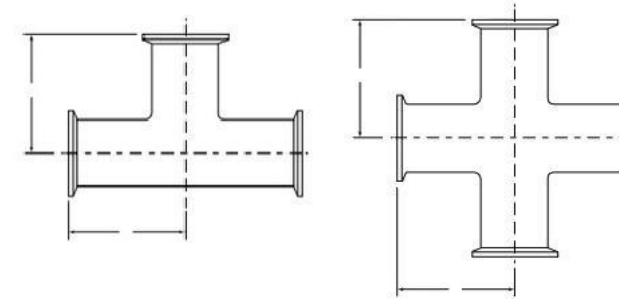
SIZE	L1	L2	D	T
25	55.0	14.5	25.4	1.5
32	55.0	18.0	31.8	1.5
38	70.0	21.5	38.1	1.5
51	82.0	29.5	50.8	1.5
63	105.0	36.0	63.5	2.0
76	110.0	43.0	76.2	2.0
102	150.0	57.0	101.6	2.0



自動チューブ溶接ショートアウトレットサニタリークランプ、ジョイントレデュースングT

BPE

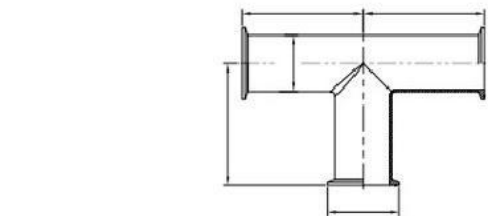
Nominal Size, in.		A		B	
X	Y	in	mm	in	mm
3/8	1/4	1.750	44.5	1.000	25.4
1/2	1/4	1.875	47.6	1.000	25.4
1/2	3/8	1.875	47.6	1.000	25.4
3/4	1/4	2.000	50.8	1.000	25.4
3/4	3/8	2.000	50.8	1.000	25.4
3/4	1/2	2.000	50.8	1.000	25.4
1	1/4	2.125	54.0	1.125	28.6
1	3/8	2.125	54.0	1.125	28.6
1	1/2	2.125	54.0	1.125	28.6
1	3/4	2.125	54.0	1.125	28.6
1-1/2	1/2	2.375	60.3	1.375	34.9
1-1/2	3/4	2.375	60.3	1.375	34.9
1-1/2	1	2.375	60.3	1.375	34.9
2	1/2	2.875	73.0	1.625	41.3
2	3/4	2.875	73.0	1.625	41.3
2	1	2.875	73.0	1.625	41.3
2	1-1/2	2.875	73.0	1.625	41.3
2-1/2	1/2	3.125	79.4	1.875	47.6
2-1/2	3/4	3.125	79.4	1.875	47.6
2-1/2	1	3.125	79.4	1.875	47.6
2-1/2	1-1/2	3.125	79.4	1.875	47.6
2-1/2	2	3.125	79.4	1.875	47.6
3	1/2	3.375	85.7	2.125	54.0
3	3/4	3.375	85.7	2.125	54.0
3	1	3.375	85.7	2.125	54.0
3	1-1/2	3.375	85.7	2.125	54.0
3	2	3.375	85.7	2.125	54.0
3	2-1/2	3.375	85.7	2.125	54.0
4	1/2	4.125	104.8	2.625	66.7
4	3/4	4.125	104.8	2.625	66.7
4	1	4.125	104.8	2.625	66.7
4	1-1/2	4.125	104.8	2.625	66.7
4	2	4.125	104.8	2.625	66.7
4	2-1/2	4.125	104.8	2.625	66.7
4	3	4.125	104.8	2.625	66.7
6	1/2	5.625	142.9	3.625	92.1
6	3/4	5.625	142.9	3.625	92.1
6	1	5.625	142.9	3.625	92.1
6	1-1/2	5.625	142.9	3.625	92.1
6	2	5.625	142.9	3.625	92.1
6	2-1/2	5.625	142.9	3.625	92.1
6	3	5.625	142.9	3.625	92.1
6	4	5.625	142.9	3.750	95.3



サニタリークランプジョイント ストレートT&クロス DT-4.1.2-4

BPE

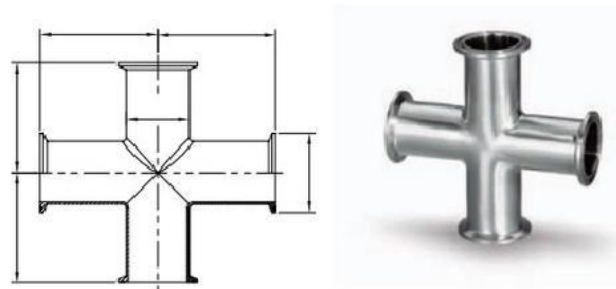
Nominal Size, in.	A	
	in	mm
1/4	2.250	57.2
3/8	2.250	57.2
1/2	2.250	57.2
3/4	2.375	60.3
1	2.625	66.7
1-1/2	2.875	73.0
2	3.375	85.7
2-1/2	3.625	92.1
3	3.875	98.4
4	4.750	120.7
6	7.125	187.0



ロングタイプクランプティー

3A

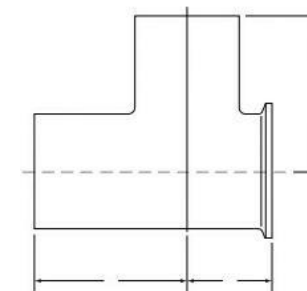
SIZE	L1	K	D
1/2"	50.8	25.2	12.7
3/4"	60.3	25.2	19.05
1"	60.3	50.5	25.4
1-1/4"	60.4	50.5	31.8
1-1/2"	69.9	50.5	38.1
2"	88.9	64.0	50.8
2-1/2"	88.9	77.5	63.5
3"	95.3	91.0	76.2
4"	114.3	119.0	101.6



ロングタイプクランプジョイント

3A

SIZE	L1	K	D
1	60.3	50.5	25.4
1-1/4"	60.4	50.5	31.8
1-1/2"	69.9	50.5	38.1
2"	88.9	64.0	50.8
2-1/2"	88.9	77.5	63.5
3"	95.3	91.0	76.2
4"	114.3	119.0	101.6



自動チューブ溶接ショートアウトレットサニタリークランプ、ジョイントレデュースングT DT-4.1.2-2

BPE

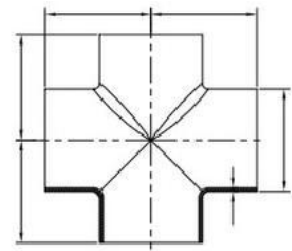
Nominal Size, in.	A		B		C	
	in	mm	in	mm	in	mm
1/4	0.875	22.2	1.750	44.5	1.750	44.5
3/8	0.875	22.2	1.750	44.5	1.750	44.5
1/2	0.875	22.2	1.875	47.6	1.875	47.6
3/4	1.000	25.4	2.000	50.8	2.000	50.8
1	1.125	28.6	2.125	54.0	2.125	54.0
1-1/2	1.375	34.9	2.375	60.3	2.375	60.3
2	1.625	41.3	2.875	73.0	2.857	73.0
2-1/2	1.875	47.6	3.125	79.4	3.125	79.4
3	2.125	54.0	3.375	85.7	3.375	85.7
4	2.750	69.9	4.125	104.8	4.125	104.8
6	4.625	117.5	5.625	142.9	5.625	142.9



ショートタイプ溶接クロス (L9WWW)

3A

SIZE	L1	D	T
1"	28.6	25.4	1.65
1-1/4"	38.0	31.8	1.65
1-1/2"	42.05	38.1	1.65
2"	52.35	50.8	1.65
2-1/2"	59.55	63.5	1.65
3"	65.9	76.2	1.65
4"	87.35	101.6	2.1



ロングタイプ溶接クロス (L9W)

3A

SIZE	L1	D	T
1	47.6	25.4	1.65
1-1/4"	47.7	31.8	1.65
1-1/2"	57.2	38.1	1.65
2"	76.2	50.8	1.65
2-1/2"	76.2	63.0	1.65
3"	82.6	76.2	1.65
4"	98.4	101.6	2.1

溶接クロス

ISO/IDF

Size	L1	D	T	L1(短型)
φ12.7	19.1	12.7	1.5	19.1
φ19.1	28.5	9.1	1.5	28.5
φ25	33.5	25.4	1.5	33.5
φ32	38.0	31.8	1.5	38.0
φ38	48.5	38.1	1.5	48.5
φ45	54.0	45.0	1.5	54.0
φ51	60.5	50.8	1.5	60.5
φ57	68.0	57.0	1.5	58.0
φ63	83.5	63.5	2.0	67.5
φ76	88.5	76.2	2.0	77.0
φ89	103.5	89.0	2.0	86.0
φ102	127.0	101.6	2.0	100.0

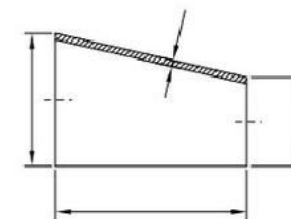
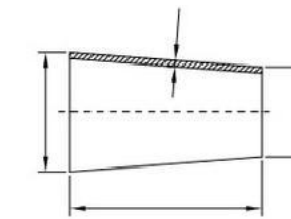
溶接クロス

DIN

SIZE	L1	D	T
DN25	50.0	28.6	1.5
DN32	55.0	34.0	1.5
DN40	60.0	40.0	1.5
DN50	70.0	52.0	1.5
DN65	80.0	70.0	2.0
DN80	90.0	85.0	2.0
DN100	100.0	104.0	2.0

DT-4.1.2-1 自動チューブ溶接ストレートT、クロス BPE

Nominal Size, in.	A	
	in	mm
1/4	1.750	44.5
3/8	1.750	44.5
1/2	1.875	47.6
3/4	2.000	50.8
1	2.125	54.0
1-1/2	2.357	60.3
2	2.875	73.0
2-1/2	3.125	79.4
3	3.375	85.7
4	4.125	104.8
6	5.625	142.9



溶接レデューサー

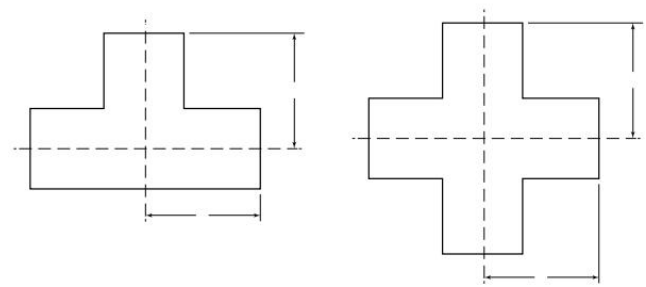
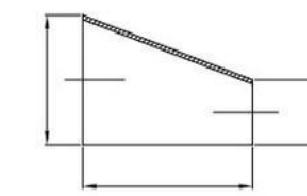
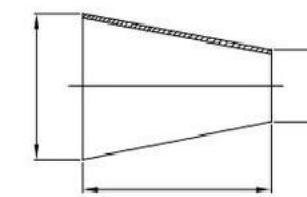
3A

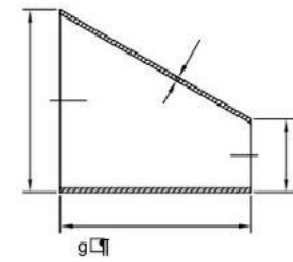
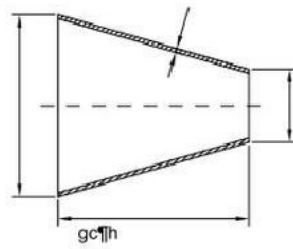
SIZE	L1	D	D2	T
1" 1/2"	50.8	25.4	12.7	1.65x1.65
1" 3/4"	25.4	25.4	19.05	1.65x1.65
1-1/2" 1"	50.8	38.1	25.4	1.65x1.65
1-1/2" 1-1/4"	25.4	38.1	31.8	1.65x1.65
2" 1"	101.6	50.8	25.4	1.65x1.65
2" 1-1/2"	50.8	50.8	38.1	1.65x1.65
2-1/2" 1-1/2"	101.6	63.5	38.1	1.65x1.65
2-1/2" 2"	50.8	63.5	50.8	1.65x1.65
3" 1-1/2"	152.4	76.2	38.1	1.65x1.65
3" 2"	101.6	76.2	50.8	1.65x1.65
3" 2-1/2"	50.8	76.2	63.5	1.65x1.65
4" 2"	203.2	101.6	50.8	2.1x1.65
4" 2-1/2"	152.4	101.6	63.5	2.1x1.65
4" 3"	101.6	101.6	76.2	2.1x1.65

溶接レデューサー

DIN

SIZE	A	D	D2
DN20/15	7.0	22.0	18.0
DN25/20	11.0	28.0	22.0
DN32/20	22.0	34.0	22.0
DN32/25	11.0	34.0	28.0
DN40/20	33.0	40.0	22.0
DN40/25	22.0	40.0	28.0
DN40/32	11.0	40.0	34.0
DN50/25	44.0	52.0	28.0
DN50/32	33.0	52.0	34.0
DN50/40	22.0	52.0	40.0
DN65/25	73.0	70.0	28.0
DN65/32	62.0	70.0	34.0
DN65/40	51.0	70.0	40.0
DN65/50	29.0	70.0	52.0
DN80/40	78.0	85.0	40.0
DN80/50	56.0	85.0	52.0
DN80/65	27.0	85.0	70.0
DN700/50	90.0	104.0	52.0
DN100/65	61.0	104.0	70.0
DN100/80	34.0	104.0	85.0

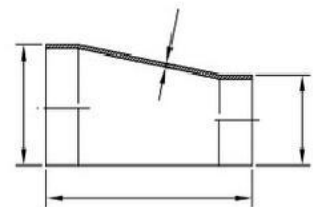
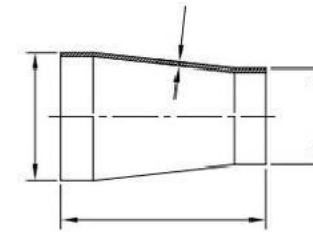




溶接レデューサー

BS4825

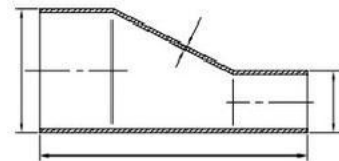
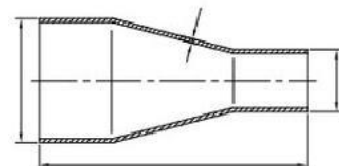
SIZE		L1	L2	D	D2	T
1	1/2	25.0	/	25.4	12.7	1.6X1.6
1	3/4	14.0	/	25.4	19.05	1.6X1.6
1-1/2	1	28.0	29.0	38.1	25.4	1.6X1.6
2	1	49.0	48.0	50.8	25.4	1.6X1.6
2	1-1/2	31.0	39.0	50.8	38.1	1.6X1.6
2-1/2	1	76.0	73.0	63.5	25.4	1.6X1.6
2-1/2	1-1/2	48.0	47.0	63.5	38.1	1.6X1.6
2-1/2	2	41.0	44.0	63.5	50.8	1.6X1.6
3	1	100.0	95.0	76.2	25.4	1.6X1.6
3	1-1/2	74.0	70.0	76.2	38.1	1.6X1.6
3	2	50.0	46.0	76.2	50.8	1.6X1.6
3	2-1/2	40.0	36.0	76.2	63.5	1.6X1.6
4	1	149.0	149.0	101.6	25.4	2.0X1.6
4	1-1/2	128.0	15.0	101.6	38.1	2.0X1.6
4	2	100.0	91.0	101.6	50.8	2.0X1.6
4	2-1/2	75.0	69.0	101.6	63.5	2.0X1.6
4	3	51.0	78.0	101.6	76.2	2.0X1.6



ストレートエンド用溶接レデューサー

SMS

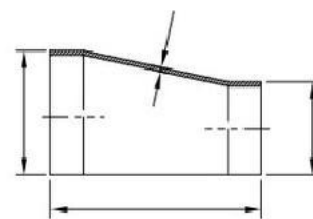
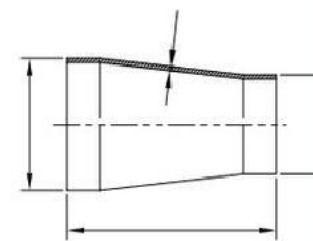
SIZE		L1	L	D	D2	T1	T2
19	12.7	28.0	/	19.05	12.7	1.25/1.25	1.5/1.5
25	12.7	30.0	/	25.4	12.7	1.25/1.25	1.5/1.5
25	19.0	30.0	39.0	25.4	19.05	1.25/1.25	1.5/1.5
32	25.0	33.0	42.0	31.8	25.4	1.25/1.25	1.5/1.5
38	25.0	39.0	46.0	38.1	25.4	1.25/1.25	1.5/1.5
51	25.0	57.0	68.0	50.8	25.4	1.25/1.25	1.5/1.5
51	38.0	39.0	47.0	50.8	38.1	1.25/1.25	1.5/1.5
63	25.0	74.0	92.0	63.5	25.4	1.6/1.25	2.0/1.5
63	38.0	57.0	70.0	63.5	38.1	1.6/1.25	2.0/1.5
63	51.0	39.0	44.0	63.5	50.8	1.6/1.25	2.0/1.5
76	25.0	95.0	95.0	76.2	25.4	1.6/1.25	2.0/1.5
76	38.0	74.0	92.0	76.2	38.1	1.6/1.25	2.0/1.5
76	51.0	57.0	68.0	76.2	50.8	1.6/1.25	2.0/1.5
76	63.0	39.0	47.0	76.2	63.5	1.6/1.25	2.0/2.0
102	51.0	95.0	117.0	101.6	50.8	2.0/1.25	2.0/1.5
102	63.0	78.0	94.0	101.6	63.5	2.0/1.6	2.0/2.0
102	76.0	60.0	74.0	101.6	76.2	2.0/1.6	2.0/2.0



ストレートエンド用溶接レデューサー

BS4825

SIZE		L1	D	D2	T
1-1/2	1	99.0	38.1	25.4	1.6x1.6
2	1	117.0	50.8	25.4	1.6x1.6
2	1-1/2	99.0	50.8	38.1	1.6x1.6
2-1/2	1-1/2	117.0	63.5	38.1	1.6x1.6
2-1/2	2	99.0	63.5	50.8	1.6x1.6
3	1-1/2	134.0	76.2	38.1	1.6x1.6
3	2	117.0	76.2	50.8	1.6x1.6
3	2-1/2	99.0	76.2	63.5	1.6x1.6
4	2	155.0	101.6	50.8	2.0x1.6
4	2-1/2	138.0	101.6	63.5	2.0x1.6
4	3	120.0	101.6	76.2	2.0x1.6



ストレートエンド用溶接レデューサー

ISO/IDF

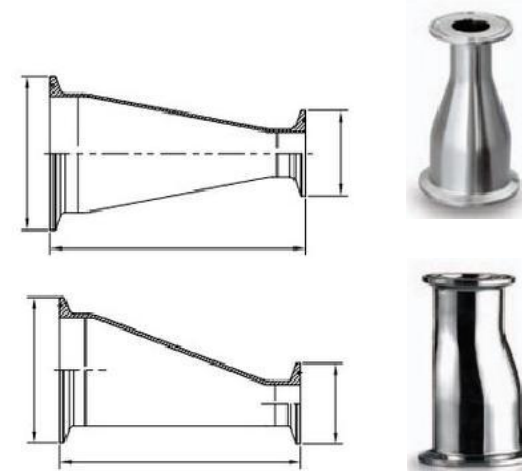
SIZE		L1	D	D2	T
25	19	38.0	25.4	19.05	1.5X1.5
32	25	50.0	31.8	25.4	1.5X1.5
38	32	50.0	38.1	31.8	1.5X1.5
38	25	50.0	38.1	25.4	1.5X1.5
51	38	67.0	50.8	38.1	1.5X1.5
51	32	67.0	50.8	31.8	1.5X1.5
51	25	67.0	50.8	25.4	1.5X1.5
63	51	67.0	63.5	50.8	2.0X1.5
63	38	67.0	63.5	38.1	2.0X1.5
63	25	67.0	63.5	25.4	2.0X1.5
76	63	67.0	76.2	63.5	2.0X2.0
76	51	67.0	76.2	50.8	2.0X1.5
76	38	67.0	76.2	38.1	2.0X1.5
89	76	67.0	89.0	76.2	2.0X2.0
89	63	67.0	89.0	63.5	2.0X2.0
89	51	67.0	89.0	50.8	2.0X1.5
102	89	87.0	101.6	89.0	2.0X2.0
102	76	87.0	101.6	76.2	2.0X2.0
102	63	87.0	101.6	63.5	2.0X2.0
102	51	87.0	101.6	50.8	2.0X1.5



クランプレデューサー

SMS

SIZE	L1	L	K	K2
19	12.7	53.2	/	25.2
25	12.7	55.2	/	50.5
25	19.0	55.4	64.4	25.2
32	25.0	58.4	67.4	50.5
38	25.0	64.4	71.4	50.5
51	25.0	82.4	93.4	64.0
51	38.0	64.4	72.4	50.5
63	25.0	99.2	117.4	77.5
63	38.0	82.2	95.4	50.5
63	51.0	64.4	69.4	64.0
76	25.0	20.4	120.4	91.0
76	38.0	99.4	117.4	91.0
76	51.0	82.2	93.4	91.0
76	63.0	64.4	72.4	91.0
102	51.0	23.6	145.6	119.0
102	63.0	106.6	122.6	119.0
102	76.0	88.6	102.6	119.0



クランプレデューサー

3A

SIZE	L1	K	Ka
1-1/2" 1"	76.2	50.5	50.5
2" 1"	127.0	64.0	50.5
2" 1-1/2"	76.2	64.0	50.5
2-1/2" 1-1/2"	127.0	77.5	50.5
2-1/2" 2"	76.2	77.5	64.0
3" 1-1/2"	177.8	91.0	50.5
3" 2"	127.0	91.0	64.0
3" 2-1/2"	76.2	91.0	77.5
4" 2"	231.8	119.0	64.0
4" 2-1/2"	181.0	119.0	77.5
4" 3"	130.2	119.0	



クランプレデューサー

DIN

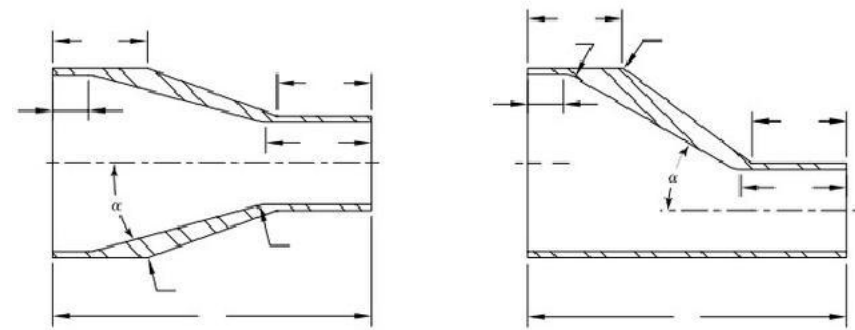
SIZE	L1	K	Ka
DN20/15	50.0	34.0	34.0
DN25/20	54.0	50.5	34.0
DN32/20	65.0	50.5	34.0
DN32/25	54.0	50.5	50.5
DN40/20	76.0	50.5	34.0
DN40/25	65.0	50.5	50.5
DN40/32	54.0	50.5	50.5
DN50/25	87.0	64.0	50.5
DN50/32	76.0	64.0	50.5
DN50/40	65.0	64.0	50.5
DN65/25	116.0	91.0	50.5
DN65/32	105.0	91.0	50.5
DN65/40	94.0	91.0	50.5
DN65/50	72.0	91.0	64.0
DN80/40	121.0	106.0	50.5
DN80/50	99.0	106.0	64.0
DN80/65	70.0	106.0	91.0
DN100/50	133.0	119.0	64.0
DN100/65	104.0	119.0	91.0
DN100/80	77.0	119.0	106.0



クランプレデューサー

ISO/DIN

SIZE	L1	K	Ka
Φ25 Φ19	80.0	50.5	34.0
Φ32 Φ25	92.0	50.5	50.5
Φ38 Φ32	92.0	50.5	50.5
Φ38 Φ25	92.0	50.5	50.5
Φ51 Φ38	109.0	64.0	50.5
Φ51 Φ32	109.0	64.0	50.5
Φ51 Φ25	109.0	64.0	50.5
Φ63 Φ51	109.0	77.5	64.0
Φ63 Φ38	109.0	77.5	50.5
Φ63 Φ25	109.0	77.5	50.5
Φ76 Φ63	109.0	91.0	77.5
Φ76 Φ51	109.0	91.0	64.0
Φ76 Φ38	109.0	91.0	50.5
Φ89 Φ76	109.0	106.0	91.0
Φ89 Φ63	109.0	106.0	77.5
Φ89 Φ51	109.0	106.0	64.0
Φ102 Φ89	129.0	119.0	106.0
Φ102 Φ76	129.0	119.0	91.0
Φ102 Φ63	129.0	119.0	77.5
Φ102 Φ51	129.0	119.0	64.0

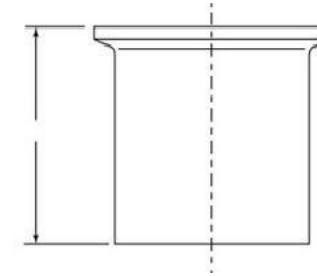


溶接レデューサー

DT-4.1.3-1 Automatic Tube Weld Concentric and Eccentric Reducer

BPE

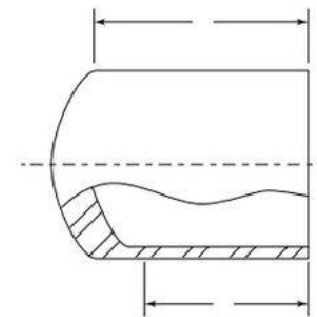
Nominal Size, in.		Overall Length A, in.	Minimum I.D Tangent, Large End, L1, in.	Minimum I.D Tangent, Small End, L2, in.	Minimum I.D Tangent, Small End, L3, in.	Minimum I.D Tangent, Large End, L4, in.	Minimum Internal Taper α , deg	Minimum Internal Radius R1, in.	Minimum Internal Radius R2, in.
X	Y								
3/8	1/4	1.625	0.375	0.875	0.750	0.750	30	0.250	0.031
1/2	1/4	1.875	0.375	0.875	0.750	1.000	30	0.250	0.031
1/2	3/8	1.875	0.375	0.875	0.750	1.000	30	0.250	0.031
3/4	3/8	2.000	0.375	0.875	0.750	1.000	30	0.250	0.031
3/4	1/2	2.125	0.375	1.125	1.000	1.000	30	0.250	0.031
1	1/2	2.500	0.375	1.125	1.000	1.000	30	0.250	0.031
1	3/4	2.125	0.375	1.125	1.000	1.000	30	0.250	0.031
1-1/2	3/4	3.000	0.375	1.125	1.000	1.000	30	0.250	0.031
1-1/2	1	2.500	0.375	1.125	1.000	1.000	30	0.250	0.031
2	1	3.375	0.375	1.125	1.000	1.000	30	0.250	0.031
2	1-1/2	2.500	0.375	1.125	1.000	1.000	30	0.250	0.031
2-1/2	1-1/2	3.375	0.375	1.125	1.000	1.000	30	0.250	0.031
2-1/2	2	2.500	0.375	1.125	1.000	1.000	30	0.250	0.031
3	1-1/2	4.250	0.375	1.125	1.000	1.500	30	0.250	0.031
3	2	3.375	0.375	1.125	1.00C	1.500	30	0.250	0.031
3	2-1/2	2.625	0.375	1.125	1.000	1.500	30	0.250	0.031
4	2	5.125	0.375	1.125	1.000	1.500	30	0.250	0.031
4	2-1/2	4.250	0.375	1.125	1.000	1.500	30	0.250	0.031
4	3	3.875	0.375	1.625	1.500	1.500	30	0.250	0.031
6	3	7.250	0.375	1.625	1.500	2.000	30	0.250	0.031
6	4	5.625	0.375	1.625	1.500	2.000	30	0.250	0.031



自動チューブ溶接フェルール
DT-4.1.4-1

BPE

Nominal Size, in.	A		B		C	
	in	mm	in	mm	in	mm
1/4	1.750	44.5	1.130	28.7	0.500	12.7
3/8	1.750	44.5	1.130	28.7	0.500	12.7
1/2	1.750	44.5	1.130	28.7	0.500	12.7
3/4	1.750	44.5	1.130	28.7	0.500	12.7
1	1.750	44.5	1.130	28.7	0.500	12.7
1-1/2	1.750	44.5	1.130	28.7	0.500	12.7
2	2.250	57.2	1.130	28.7	0.500	12.7
2-1/2	2.250	57.2	1.130	28.7	0.50C	12.7
3	2.250	57.2	1.130	28.7	0.50C	12.7
4	2.250	57.2	1.130	28.7	0.625	15.9
6	3.000	76.2	1.500	38.1	0.750	



自動チューブ溶接キャップ
DT-4.1.5-1

BPE

Nominal Size, in.	A	
	in	mm
1/2	1.500	38.1
3/4	1.500	38.1
1	1.500	38.1
1-1/2	1.500	38.1
2	1.500	38.1
2-1/2	1.500	38.1
3	1.750	44.5
4	2.000	50.8
6	2.500	63.5

サニタリークランプジョイントソリッドエンドキャップ
DT-4.1.5-2

BPE

Nominal Size, in.	Type	A. MIN	
		in	mm
1/4	A	0.187	4.7
3/8	A	0.187	4.7
1/2	A	0.187	4.7
3/4	A	0.187	4.7
1	A	0.250	6.4
1	B	0.250	6.4
1-1/2	B	0.250	6.4
2	B	0.250	6.4
2-1/2	B	0.250	6.4
3	B	0.250	6.4
4	B	0.312	7.9
6	B	0.437	11.1